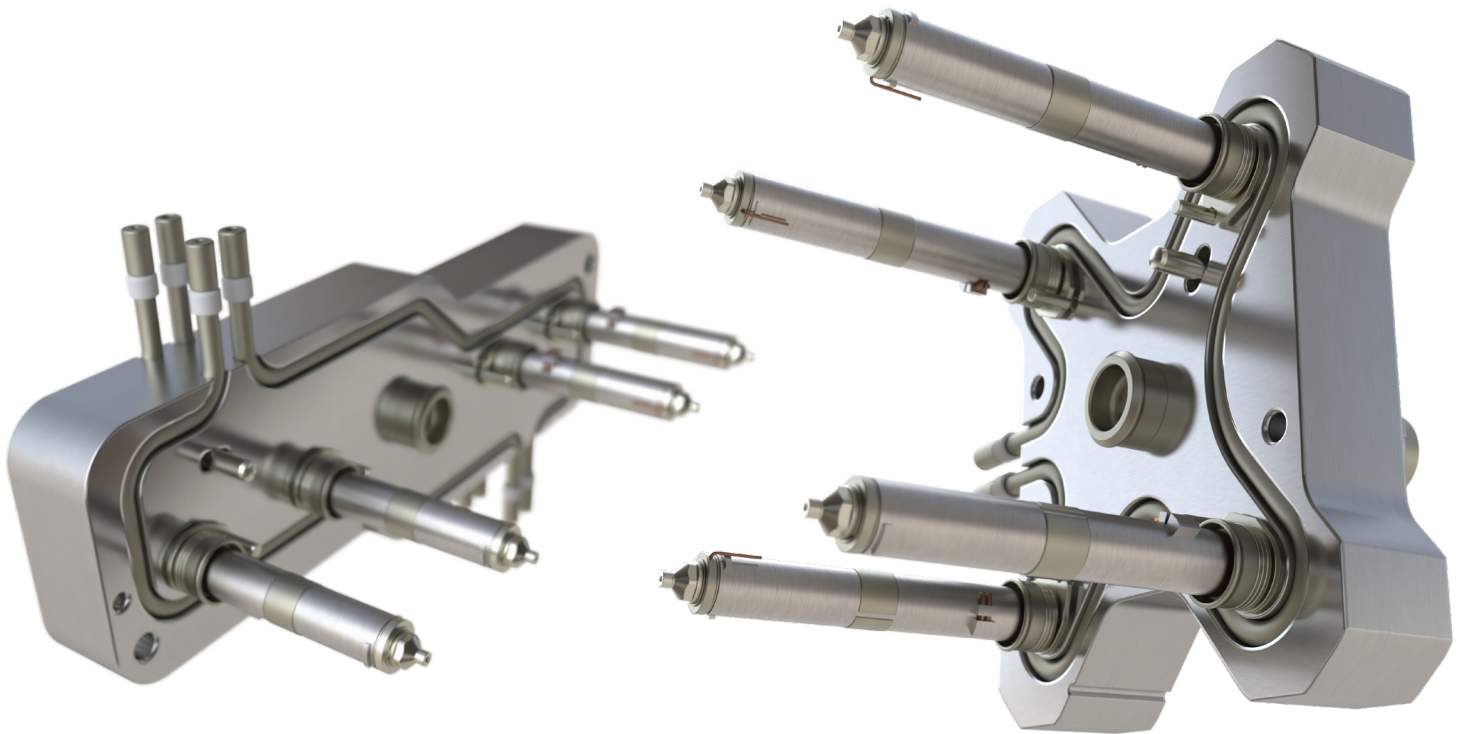




PRONTO[®] Direct

The fastest and most cost-effective way to order and configure world-class Husky hot runners



The highly successful PRONTO[®] line of hot runner and manifold systems just got even better. With PRONTO[®] Direct you can now easily order our highly-configurable PRONTO[®] single drop and manifold systems through our local Husky team at up to 20% lower cost and greatly reduced lead times. Offering superior performance, flexibility and unbeatable value, PRONTO[®] Direct hot runners come with a fully configurable manifold and nozzle components.



Configure it Quickly

PRONTO[®] Direct is perfect for a wide range of applications. Quickly configure it in a few short steps.



Get it Fast

Ships up to two weeks faster than conventional hot runners. Order(online) today and get the 3D engineering models within 24 hours.



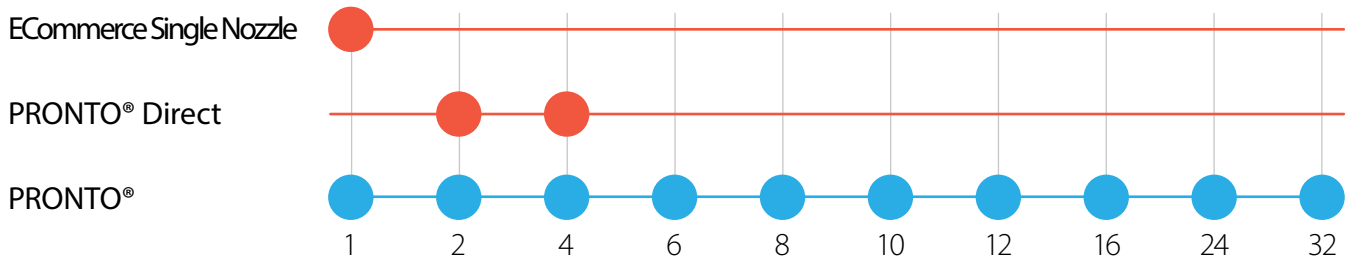
Spend Less

Significant savings compared to our regularly priced PRONTO[®] hot runners purchased offline – with zero sacrifice in quality.

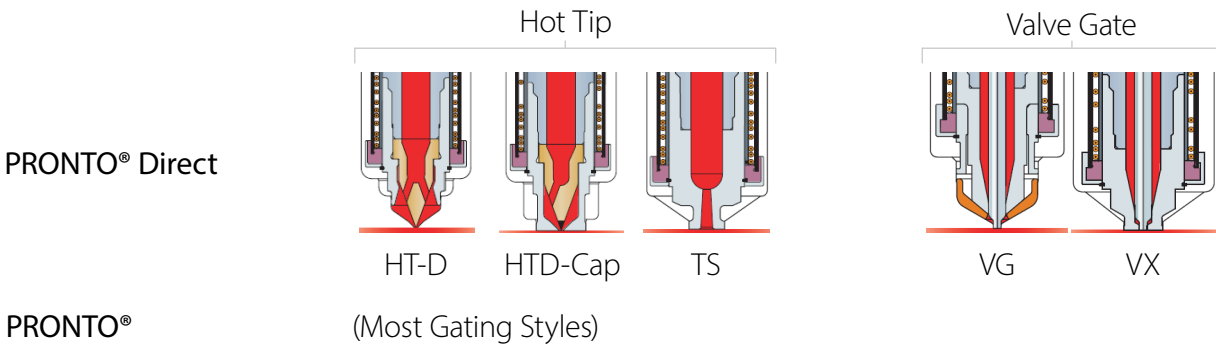
Quick Guide: PRONTO® Direct vs. PRONTO®

Is PRONTO® Direct right for your application? Here are some of the key PRONTO® Direct specifications and how they compare to our existing PRONTO® line.

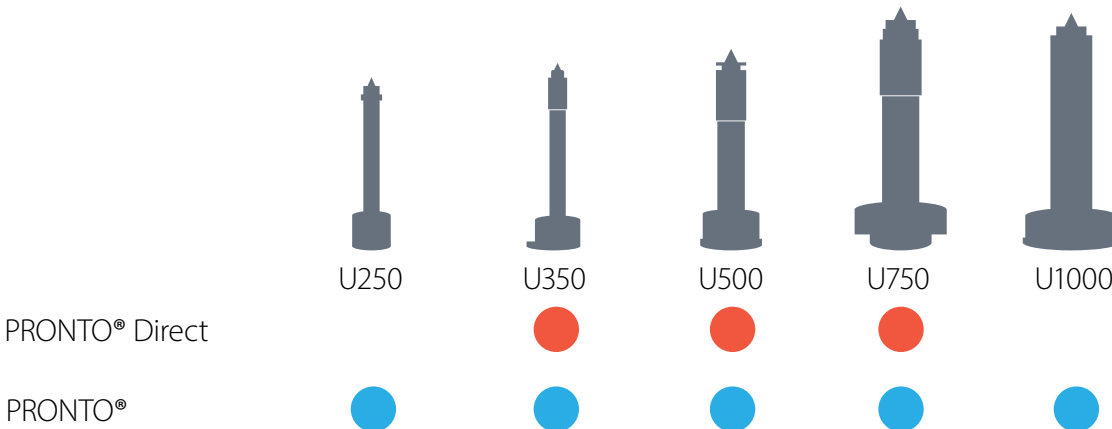
Number of Drops



Gating Style



Nozzle Sizes



Why PRONTO® Direct?

PRONTO® Direct is perfect for a wide range of applications in markets such as automotive, consumer electronics, packaging and personal care.



Efficient Ordering

Place your order with our sales team and receive engineering drawings within 24 hours.



Design Optimization

Shorter drawing lead times allow for a faster mold design process.



Faster to Market

With shorter lead times, PRONTO® Direct is perfect for rapid prototyping and reducing your time-to-market.



Reduced Risk

PRONTO® Direct offers proven Husky quality, with leakproof operation and full warranty.



Maximize Your Value

Competitive pricing helps deliver a higher return on investment.



Higher Part Consistency

Every system is pre-validated to ensure thermal uniformity.

PRONTO® Direct is Fast and Easy

PRONTO® Direct is perfect for a wide range of applications in markets such as automotive, consumer electronics, packaging and personal care.

01

Check the detailed specifications to see if PRONTO® Direct is a good fit for your application.

02

Contact sales representative to take your details and initiate the order.

03

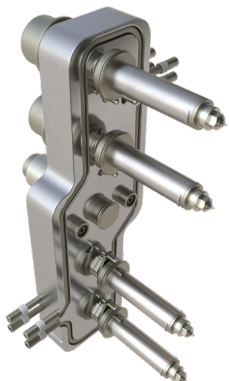
Automated technical review and design tools ensure an optimized, customized product.

04

Delivery of engineering drawings within 24 hours.

05

Your PRONTO® Direct system ships at a reduced lead time.



Get Started With PRONTO® Direct

PRONTO® Direct online ordering is currently available to selected customers. Get in touch to apply for our beta program and start saving!

[Contact Us »](#)



Full Specifications

✓ Available | ○ Optional | ✗ Not Available

PRONTO® Direct

PRONTO®

	Market	All	All
Application	Resin	Most standard, non-corrosive resins: ABS, PA6, PA66, PP, PS, PE, HDPE, LDPE, LLDPE, MDPE, TPE, PBT	Most resin families
	Filler	Most common filler	Most common filler
	Filler %	Depending on the resin used, the filler content can be up to 32% ⁴	Not limited ¹
	Corrosive Application	Not supported	○
	Max Pressure	26 000 PSI (1792 bar)	○
	Max Temperature	80°C for Mold and 290°C for Melt	○
	Technical Review / Approval	Not required	○
	Configuration	System Type	Manifold System Only
Drops #		2 & 4	1, 2, 4, 6, 8, 12, 16, 24, 32
Nozzle Size		U350 & U500 & U750	U250 - U1000
Gate Style		Standard gating styles. Extra-stock tips, extended tips and UltraHelix are not supported.	Most gate styles
Min. & Max. L-Dim		Same	
Multiple L-Dim		✗	✓
Length Measurement		L-Dim approx. BL-Dim	L-Dim BL-Dim
Min. Drop		Same	
Max. Drop		Same	
Min. Pitch		Same	
Pitch Offset		✗	✗
Piston Style		LX, EX, EMI	SX, LX, EX, EEX, EMI
Valve Stem Shut-off	Taper / Plunger	Taper Plunger	
Sprue Bushing	Sprue Orifice Diameter	6.35mm, 8mm, 11.5mm	Customized ¹
	Machine Interface	Flat, SR 10mm, SR 12.7mm, SR 15.5mm, SR 19.05mm, SR 20mm, SR 40mm, 90° conical	Customized ¹
Electrical Configuration	Sheet Metal Electrical Adapter Box	○	✓
	Electrical Connector Pins	16, 24, 25	6, 16, 24, 25, 32, 48
	Latches	Double, Single	Double, Single
	Wiring Sequence	Tip/Manifold/Sprue No empty zones allowed	Customized ¹
	Zone Reduction Requests	✗	✓
	Wiring of nozzle heaters through the manifold pocket	✗	✗
Accessories	Locating Ring ø100mm, ø101.3mm, ø101.6mm, ø120mm, ø125mm, ø160mm	✓	✓
	Project Nameplate	✓	✓
	Electrical Nameplate	✗	○
	Isometric Nameplate	✗	○
	Operator Manual	✓	✓
	Heater Removal Tool	✓	✓
	Wire Clamps	✓	✓
	Wire Clips	○	○
Spare Parts	○	○	
Others	3D Manifold-System + Inverted Pocket	✓	✓
	Wire Groove	✗	○
	Husky installation 3D ²	✗	○
	Engineering Changes	Limited ⁵	✓

Notes

- Requires technical review and approval
- Includes
 - Water & air lines
 - Bolting between 2 HR plates;
 - Installation of nameplate;
 - Electrical. box based on Husky STD.; if applicable
- Changes are allowed if they remain within the Pronto Direct Criteria
- Technical approval not required
- selected by Application-Guidelines

Husky Technologies

husky.co

Head Office
Asia Pacific
Europe

Canada • Tel. (905) 951 5000 • Fax (905) 951 5384
China • Tel. (86) 21 2033 1000 • Fax (86) 21 5048 4900
Luxembourg • Tel. (352) 52 11 51 • Fax (352) 52 60 10